



Boat Sales



www.farndonmarina.co.uk

alex.boden@farndonmarina.co.uk

Tel No: 01636 705483

Name:

ELIARNA



Manufacturer: Branson Boats Ltd

Model: Coaster

Year: 2015

Ref: FHM3453

Lying: Farndon Marina

Price: £199,995

L.O.A.: 16.14 mts (53 ft 0ins)

Beam: 3.96 mts (13ft 0ins)

Draft: 1.4 mts (4ft 6ins)

Construction: Steel

Cruising speed: 6 knots

Engines: Volvo TMD 120A 260hp

Fuel type: Diesel

Fuel: 2270 Litres

Shore support: Yes

Colour: Blue/White

Accommodation: 2+2 berths, 2 cabins

Layout: Wide Beam/ Aft Cabin

Heads No: 1x Electric, 1x Manual.

Showers: 2

Fresh Water: 1000 Litres

Holding Tank: 200 Litres

Water system: Hot water via Calorifier/Immersion

Category: B

Heating: Webasto Thermo 90ST central heating + Eberspacher in wheelhouse and aft cabin

A STUNNING EXAMPLE OF THIS QUALITY BARGE.

The Company normally acts as broker for the vendors who unless otherwise stated is not selling in the course of a business. Whilst every care has been taken in the preparation of these particulars the correctness is not guaranteed and they are intended as a guide only and do not constitute a part of any contract. A prospective buyer is strongly advised to check these particulars and at his own expense to employ a qualified marine surveyor to carry out a survey and / or to have an engine trial conducted by us shall not imply any liability on our part.

Eliarna is a stunning home from home Cat B barge. It is a Branson Coaster 49 customised to 53'. It is a professional build and fit out. Eliarna has been built to very high standards and is a credit to her owners. Early viewing strongly recommended.

Accommodation:

Wheelhouse: Access to Eliarna is gained via the full-size port or stb side doors leading into the stunning wheelhouse.
You can immediately see the quality of this boat. You really do feel like you're going aboard a ship. The wheelhouse benefits from a very well laid out helm station fitted that's clear and easy to use. Eliarna was built primarily for long distance travel, coastal and inland continental canals, rivers, and estuaries. As such, she has been well equipped for such journeys.
There's also a lovely seating area with access down into the aft cabin.
Access to the engine room is under the wheelhouse floor.

Aft Master Cabin: You step down from the wheelhouse into the aft cabin.
There is a large central bed with storage beneath, generous sized double wardrobe and side cabinets. Port side is the ensuite which is fitted with an electric toilet to holding tank, hand basin, surface space and storage. It is finished in a light wood.

Saloon: Back through the wheelhouse, you then step down into the plush saloon/living room
This is a very nice space. It feels luxurious thanks to the quality wood and craftsmanship.
There are two leather sofas and a hand made coffee table. There is an abundance of storage. There's high- and low-level cabinets behind the 3 seater sofa, cabinet between both sofas, cabinets down the Stb side of the saloon with a built in, retractable TV. There is also a large dogbox skylight providing ample natural light too.

Dinette: The dinette is Stb side and provides seating for up to 4 adults. There is storage beneath. The dinette also converts to a double berth.

Galley: The galley is opposite the dinette and looks into the saloon/living room.
As you would expect, it's well-appointed with the following equipment: Spinflo by Thetford, Mark 3 Caprice oven, LPG grill and hob, Stainless steel sink with mixer tap and drainer, fridge with freezer compartment, extractor fan and ample work surface and storage.

Shower room: The shower room is fitted with the same lovely light wood as the master cabin ensuite. It has a built-in full-size shower cubical with sky light above it. The water goes to a grey water holding tank. A lovely oval hand basin with mixer tap, radiator with stainless steel towel rail, electric loo to 200Lt holding tank and plumbing for a washing machine.

Foredeck: This is a safe area from which to work the lines and anchors. There's also a large storage room, gas locker and deck wash too.

Mechanical: Engine room is under wheelhouse.
Volvo TMD 120A 260hp
ZF 325-1A gearbox
Engine hours 15595
Vetus Bow-thruster

Electrics: 240v Shore support
Sterling pro charge ultra
Batteries:
1x 24v Engine cranking battery
2x 12v cranking batteries
2x 12v batteries for bow thruster and winch
1x 12v 30amp Domestic battery
6x 110v Leisure batteries

Hull Specifications: Steelwork Keel base plate, 12mm
Hull plate 6mm

[Farndon Marina](#) | [North End](#) | [Farndon](#) | [Newark](#) | [Nottinghamshire](#) | [NG24 3SX](#)

[Directors P Ainsworth \(Managing\)](#) • [J Ainsworth \(Secretary\)](#) • [Registered in England No. 1121991](#) • [Farndon Harbour Moorings Ltd T/A Farndon Marina](#)

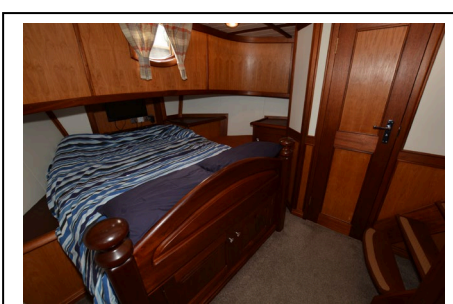
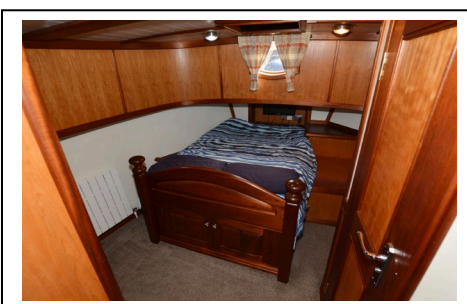
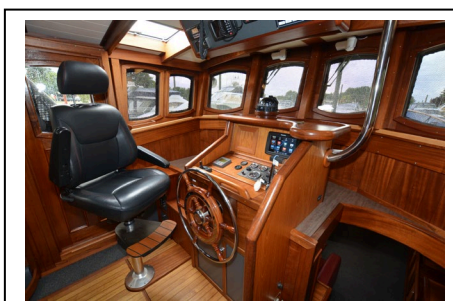
Side plates, 6mm
Counter plates, 6mm
Deck plates, 5mm

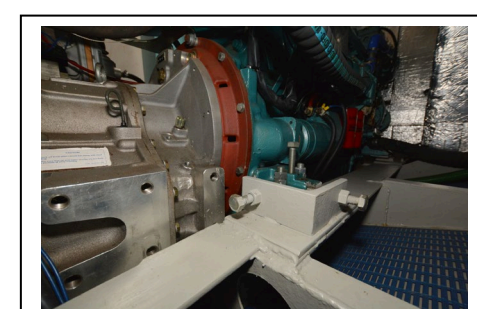
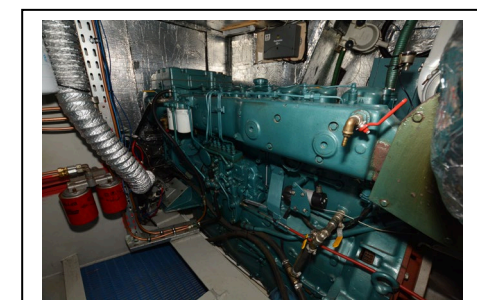
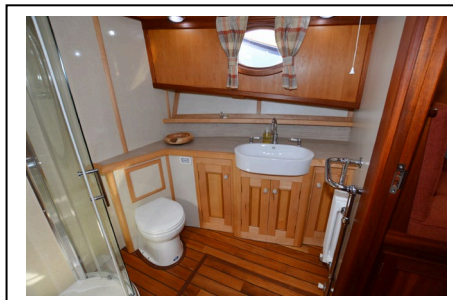
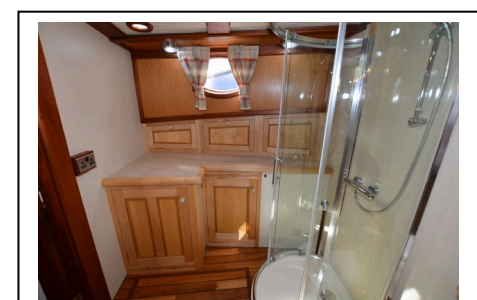
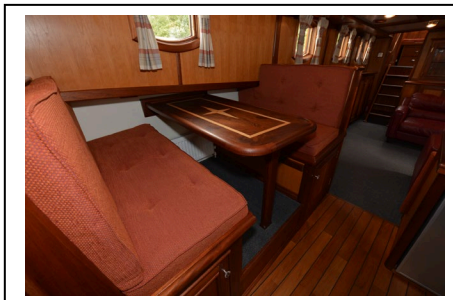
Tanks:
Diesel tanks – 2270 litres
Fresh water – 1000 litres
Holding tank – 200 litres

Inventory:
Navigation lights, Raymarine Quantum Radar, Raymarine Smart pilot Autopilot, Raymarine C95 plotter, Raymarine I40 Depth sounder, Raymarine Speed log, Standard Horizon CP180 GPS, Icom ICM411 VHF radio, 240v Shore support, Battery charger. Integrated TV and DVD player x2 and DAB Radio CD player.

Decks:
2x Anchors, Anchor chain, 1x Lofran's Tiger electric windless, Bow thruster, Deck wash pump, Fenders, Warps, Search light, Boson's chain locker, Gas locker, Store room, and Folding radar mast.

Safety:
3x Fire extinguishers, Engine room fire extinguisher, Automatic bilge pumps, Manual bilge pump, Seago G4 Life raft, Manual tiller, Fire blanket and BSS till 08/05/2023.







Farndon Marina | North End | Farndon | Newark | Nottinghamshire | NG24 3SX

Directors P Ainsworth (Managing) • J Ainsworth (Secretary) • Registered in England No. 1121991 • Farndon Harbour Moorings Ltd T/A Farndon Marina