



# Boat Sales



www.farndonmarina.co.uk

alex.boden@farndonmarina.co.uk

Tel No: 01636 705483

Name:

## ANGELO II



**Manufacturer:** Central Craftworks Ltd **Model:** 16.8m Dutch Replica **Year:** 2012

**Ref:** FHM3615

**Lying:** Farndon Marina

**Price: £159,995**

<b>L.O.A.:</b>	16.80m (56ft 0 ins)	<b>Beam:</b>	3.65m (11ft 10 ins)
<b>Draft:</b>	1.00m (3ft 2ins)	<b>Construction:</b>	Steel
<b>Cruising speed:</b>	6 knots	<b>Engines:</b>	Vetus DT44422E 114HP
<b>Power type:</b>	Diesel	<b>Fuel:</b>	Linked tanks. 1350Lts
<b>Shore support:</b>	Yes	<b>Colour:</b>	Black/White
<b>Accommodation:</b>	4 berths, 2 cabins	<b>Layout:</b>	Dutch Barge
<b>Heads No:</b>	2 Electric toilet's	<b>Showers:</b>	1
<b>Fresh Water:</b>	832Lts	<b>Holding Tank:</b>	945Lts in 2 tanks
<b>Category:</b>	D	<b>Generator:</b>	Yes. Vetus 6.5Kva
<b>Water system:</b>	Hot water via Calorifier, Diesel Boiler and Immersion		
<b>Heating:</b>	Webasto 9kw Central Heating + Wood Burner.		

**A LOVELY DUTCH BARGE REPLICA. HOME FROM HOME.**

The Company normally acts as broker for the vendors who unless otherwise stated is not selling in the course of a business. Whilst every care has been taken in the preparation of these particulars the correctness is not guaranteed and they are intended as a guide only and do not constitute a part of any contract. A prospective buyer is strongly advised to check these particulars and at his own expense to employ a qualified marine surveyor to carry out a survey and / or to have an engine trial conducted by us shall not imply any liability on our part.

<b>Accommodation:</b>	<b>Wheelhouse:</b> Access to Angeo II is gained via either side boors leading in to the light and airy wheelhouse owing to it being lined with light oak. This wood is carried on throughout the boat. The wheelhouse has a clear and uncluttered dashboard. There's a large aft bench seat with storage beneath, single seat facing aft. (Access to the engine room is under the wheelhouse floor).
<b>Galley:</b>	You step down from the wheelhouse into the galley. There is a well-equipped 'U' shaped galley looking onto the saloon. It's very well appointed with the following equipment: Thetford LPG cooker, Spinflo hob with extractor fan above, Shoreline fridge and an Indesit washing machine. Microwave oven, 2x round stainless steel sinks. There's also ample storage and work surface space.
<b>Saloon:</b>	This is a very nice airy space thanks to the large window with excellent ventilation and dogbox skylight. There's a fabric sofa, built-in TV cabinet and a lovely wood burning stove too for those cold winter evenings.
<b>Companion Way:</b>	This leads to the shower/toilet compartment and master cabin and has additional storage and surface space. Comprising of two double cabinets and a set of 4x draws.
<b>Shower room/ Toilet Compartment:</b>	The shower room has a custom-built double bathroom cabinet with mirror cabinet and overhead lighting, large walk-in, tiled shower with mixer tape. Electric flush loo to holding tank and a heated towel rail.
<b>Primary Cabin:</b>	This is a very tranquil cabin. It has a double Ottoman storage bed, ample built-in double wardrobe providing good hanging space and a 4-draw chest of draws. And a large dogbox providing ample natural light.
<b>Aft Cabin:</b>	The aft cabin is accessed from the Wheelhouse. You step down into a spacious cabin benefitting from Aft seating which converts to the bed, central heating, TV and its own En-suite.
<b>Foredeck:</b>	This is a safe area from which to work the lines and anchor.
<b>General Information:</b>	CE Mark by HPI-CEproof Ltd Fully double glazed. Webasto Thermo Top C. Rated @9kw. Wood burner. Hot water via Calorifier/Immersion and diesel boiler.
<b>Mechanical:</b>	Engine room is under wheelhouse deck. Vetus DT44422E 114hp Vetus 4-blade Right hand, bronze propeller – 22"x16". 24v Vetus 85kgf electrical Bow-thruster ZF 45 gearbox. 2:1 reduction ratio. Hydraulic steering
<b>Electrics:</b>	Batteries: 2x 110-amp hour cranking batteries 24v, 6x 135amp hour leisure batteries 24v, 2x 110amp hour sealed batteries (Bow thruster and anchor winch) 24v1x 60amp hour cranking battery (generator) 12v. Alternators: 1x 55 amp (engine), 1x 180 amp (cabin services).
<b>Hull Specifications:</b>	Keel shoe: 20mm Base plate Box Keel: 7.1mm Stern plate: BWL 6.7mm V-Hull sides: 5.3mm Stern Post: 8.3mm Rudder Flat Blade: 10mm Skeg: 20mm Weed Hatch Tunnel: 7mm

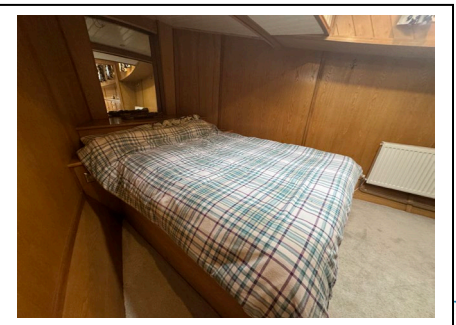
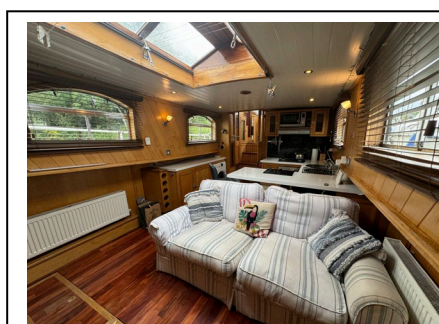
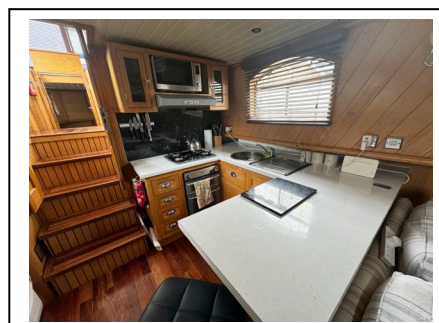
Cabin Roof: 4mm, Cabin Sides: 4mm  
Side Deck: 5mm, Fore Deck: 5mm, Aft Deck: 5mm, Bulkheads: 5mm

**Water System:** Fresh water – 832Lts  
Black water – 1x 720Lts, 1x 225Lts.

**Inventory:** Navigation lights, Garmin plotter, GPS, VHF radio, Depth sounds, Rudder indicator, Bow thruster, 6.5 KVA generator, 3000w Inverter, battery charger, 240v shore support.

**Decks:** Anchors, Anchor chain, Electric Anchor winches, Fenders, Warps.

**Safety:** Fire extinguishers, Fire blanket, BSS till 07/2025.





Farndon Marina | North End | Farndon | Newark | Nottinghamshire | NG24 3SX

Directors P Ainsworth (Managing) • J Ainsworth (Secretary) • Registered in England No. 1121991 • Farndon Harbour Moorings Ltd T/A Farndon Marina